

22/23

Annual Report

East Central Florida
Regional Planning Council





Table Of Content

About the ECFRPC

22/23 Council

Letter from the Incoming Chair

Letter from the Executive Director

Council Highlights

New Team Members

Directors

Outreach & Accolades

Financial Overview & ROI

Department Updates

- **Emergency Preparedness**
- **Community Planning**
- **Resilience & the R2C**
- **Economic Development**
- **GIS**

Contact



About the ECFRPC

The East Central Florida Regional Planning Council was established in 1962 as an area-wide association of local governments and serves eight counties, 78 cities and towns, and more than 4.5 million people within the counties of Brevard, Lake, Marion, Orange, Osceola, Seminole, Sumter, and Volusia.

Our Board is comprised of two representatives from each county, one representative from the City of Orlando, and one municipal representative from each county via the League of Cities or, if no league, the largest city, and gubernatorial appointees. Several state agencies have non-voting seats as well.

The Council provides a forum where leaders can discuss complex regional issues and set regional goals and objectives as envisioned in the 2050 Regional Vision and the 2060 Strategic Regional Policy Plan.

22/23 Executive Committee

Chair – Seminole County Commissioner Amy Lockhart

Vice-Chair – City of Wildwood Commissioner Julian Green

Secretary – Osceola County Commissioner Peggy Choudhry

Treasurer – City of Satellite Beach City Council Member Mindy Gibson

Immediate Past Chair – Orange County Commissioner Emily Bonilla

Member-at-Large – Lake County Commissioner Doug Shield

Member-at-Large – Marion County Commissioner Craig Curry

AMY LOCKHART

CHAIR | SEMINOLE CO. COMMISSIONER

Seminole County leader Amy Lockhart champions balanced education, workforce readiness, and local control. A former School Board Chair, she now serves on the County Commission and Seminole State College Board. Passionate about community, Commissioner Lockhart has served in various volunteer leadership roles supporting the great work of organizations such as Seminole County Young Life, Sallie Harrison Chapter of the National Society Daughters of the American Revolution, and the Central Florida Zoo and Botanical Gardens.

Amy Lockhart's recognitions include the SafeHouse of Seminole 2008 "Leadership Award", the Scottish American Society of Central Florida's 2013 "Brave Lass" Award, and the 2019 Orange Appeal "Women of the Year" award.



22/23 Council

County Representatives

Commissioner Rob Feltner, Brevard County
Commissioner Tom Goodson, Brevard County
Commissioner Douglas Shields, Lake County
Commissioner Sean Parks, Lake County
Commissioner Craig Curry, Marion County
Commissioner Emily Bonilla, Orange County
Commissioner Mayra Uribe, Orange County
Commissioner Ricky Booth, Osceola County
Commissioner Peggy Choudhry, Osceola County
Commissioner Lee Constantine, Seminole County
Commissioner Amy Lockhart, Seminole County
Commissioner Jeff Bogue, Sumter County
Commissioner Roberta Ulrich Sumter County
Council Member Jake Johansson, Volusia County
Council Member Danny Robins, Volusia County

Municipal Representatives

Commissioner Patty Sheehan, City of Orlando
Council Member Mindy Gibson, City of Satellite Beach, Space Coast League of Cities
Mayor Michael Holland, City of Eustis, Lake County League of Cities
Councilmember James P Hilty, Sr., City of Ocala
Commissioner Jordan Smith, City of Lake Mary, Tri-County League of Cities
Mayor Chris Cloudman, City of DeLand, Volusia County League of Cities
Commissioner Julian Green, City of Wildwood
Commissioner Rosemary Wilson, City of Ocoee, Tri-County League of Cities
Janette Martinez, City of Kissimmee, Tri-County League of Cities

Gubernatorial Appointees

Mr. Jose Rivas, Orange County
Mr. John Lesman, Seminole County

Ex-Officio Members

Ms. Tiffany Hill, Florida Dept. of Transportation
Mr. Aaron Watkins, Florida Dept. of Env. Protection
Ms. Susan Davis, St. Johns River Water Mgmt. District
Ms. Nicolle Masters, South Florida Water Mgmt. District
Mr. Patrick Doty, Southwest Florida Water Mgmt. District
Ms. Michelle Maikisch, Central Florida Expressway Authority
Mr. Mike Skyzinkski, City of Groveland
Ms. Eileen Hinson, City of Sanford



LETTER FROM THE INCOMING CHAIR



The past year has been one of celebration and innovative partnerships at the ECFRPC. From award-winning projects and team members to continued and new partnerships that bring innovative projects and strategies to support our 8 counties, 78 cities, and other partners on local and regional scale initiatives and issues.

We began our new fiscal year with a reminder that living in paradise comes with risk as our region was just recovering from the record impacts of Hurricane Ian and Hurricane Nicole struck our state. The impacts and recovery from these two storms led much of the ECFRPC work program in early 2023. Our team and partners worked closely together to respond to the immediate needs of our communities and leverage federal funding and assistance opportunities. Securing a disaster recovery coordinator primarily funded through the Economic Development Administration has been a great asset in assisting many of our community partners with developing projects and advancing federal grant applications and partnerships to aid in recovery priorities and projects.

After a nearly two-decade pause, we were proud to begin 2023 by relaunching our annual awards, now branded in honor of our sixtieth anniversary. The reimagined ECF Diamond Awards are a great way to introduce our council and local decision-makers to projects, programs, and people from across our region working to address local and state-wide issues in novel ways. We were excited to see interest in the Awards grow throughout the year, with the applicant pool for the second annual awards (2024) having two dozen applicants.

I'm honored and excited to chair the ECFRPC this coming year.



2023 award winner included;
Infinite Zion Farms
City of Cape Canaveral Community
Center
Florida Crossroads Commerce Park
HDR | MetroPlan Orlando's Health
Strategic Plan
City of Wildwood's Downtown Plan
and Osceola County's Twin Oaks
Conservation Area



LETTER FROM THE EXECUTIVE DIRECTOR

First and foremost, I'd like to thank our partners across the region and state for your continued support and collaboration with the ECFRPC in bringing new opportunities for change to our communities. These partnerships have been instrumental in securing millions of dollars to advance our region's priorities from stormwater mitigation planning and workforce development to new technologies and first responder training.

Despite the rough close to 2022 thanks to Hurricane Ian, the ECFRPC worked closely with our partners and in our communities to respond to the immediate and long-term needs across the region while leveraging potential funding and partnerships. This effort yielded EDA Disaster Recovery grant applications in multiple communities and R2P2 projects in Volusia and Orange Counties.

The RPC was privileged to engage with many of our communities and academic partners through a multitude of initiatives over the past year through our Brownfields, R2C, LEPC, and CEDS programs. More local scale projects included a number of vulnerability assessments, conservation and land use planning projects and economic development studies.

Being in a position to connect with experts across agencies, communities and institutes of higher learning enables the RPC team to bring this expertise to our region and your communities through specific projects or education events. After launching via a virtual event in 2021, this fall saw the first in-person R2C Leadership Summit to do just that. Taking place at the historic Kennedy Space Center, the two-day summit drew inspiration from the historic rockets that the meeting venue overlooked with discussion focusing on innovation, partnerships, and high-impact actions across sectors from governmental, non-profit, and private sectors to help usher our region and state towards greater resilience and sustainability together.

Lastly, we'd be remiss not to take the time to honor Jerry Livingston, our legal counsel for over half a century. His dedication to the ECFRPC can't be overstated. Working alongside Mr. Livingston over the two decades I've served at the ECFRPC was a pleasure, and he will be thoroughly missed.

We hope you enjoy learning more about the ECFRPC programs and accomplishments from the past year and celebrate with us the tremendous strides being undertaken in our region to make east central Florida the tremendous place we call home.

Council Highlights

In May, Seminole State College welcomed the ECFRPC and hosted a council meeting focused on workforce training. Council members also had the opportunity to tour Seminole State's Public Safety and Automotive programs, gaining firsthand insights into the college's workforce training pipeline. The Public Safety tour offered a glimpse into the real-world style training fire and EMS recruits undergo, while the Automotive tour showcased the program's diverse curriculum, with students working on vehicles ranging from Teslas to ambulances.



Notably, the Automotive program boasts partnerships with vehicle manufacturers, ensuring students receive the continuing education needed for our evolving transportation landscape. The agenda included updates on the LEPC and Emergency Planning program, as well as a student-led presentation showcasing the unique NJROTC program at Winter Park High School. This presentation emphasized the program's focus on workforce readiness and highlighted a recent FAA drone pilot training course provided by NJROTC instructors to several ECFRPC members.



After a hiatus of more than two decades, the ECFRPC revived the tradition of recognizing exemplary planning efforts across the region with the debut of the East Central Florida Diamond Awards. On Wednesday, January 18, 2023, at the Lake Mary Events Center, the inaugural East Central Florida Diamond Awards celebrated the ECFRPC's sixtieth anniversary by highlighting some exceptional projects realized in recent years.

The highest honor at the East Central Florida Diamond Awards, the Brilliance Award of Regional Innovation, went to Osceola County for their work with D.R. Horton on developing a water mitigation bank as part of the Twin Oaks Conservation Area. This project helped preserve and restore natural wetlands areas, some of which hadn't seen proper drainage and hydrology in over 125 years!

Welcome New Team Members



Ricardo Soto-Lopez

Ricardo Soto-López brings forty years of experience in planning, housing, economic development, and infrastructure projects in New York, New Jersey, Pennsylvania, Florida, California, Puerto Rico, and Hawaii. He is experienced in using Federal CDBG, CDBG-Recovery, CDBG-Disaster Recovery, and FEMA Public Assistance and Hazard Mitigation grant funding processes.



Parker Hines

Parker Hines began as an intern with the ECFRPC in January of 2023 and was hired full-time shortly thereafter. He is a recent graduate of Stetson University, where he studied environmental science and Hispanic studies. Moreover, he was part of the men's cross-country team, with one of his proudest achievements being to run a time of 14:30 for 5k. Parker took an interest in geographic information systems after taking a class with his professor, Dr. Mainali, whom he is grateful to for putting him in contact with the ECFRPC. Parker was raised in Miamisburg, OH.

Adrian Leithead

Adrian Leithead joined the team at ECFRPC in the Fall of 2023. He graduated from Keele University in the UK, studying Applied Environmental Science and Physical Geography. He has worked as an Energy Consultant for the past ten years with a leading UK company in assessing CO2 emissions and energy consumption of homes, buildings, and company activities. Having visited the Central Florida area for many years, he is now a proud resident, having moved from the UK to be with his spouse.



Vanessa Suazo

Vanessa Suazo-Vazquez has over 20 years of experience working on planning, environmental permitting, and community engagement projects in her native Puerto Rico. Before joining the Council, Vanessa served as a Planner in the municipality of Caguas where she played a crucial role in drafting a proposal for the City's Community Resilience Planning Program. She worked for fourteen years as an Environmental Specialist within the City's Permits/Building Office. She holds a master's in environmental planning from the Metropolitan University-San Juan and an undergraduate in Natural Sciences and Environmental Science from the University of Puerto Rico-Rio Piedras.



Directors



Julie Bowes

Finance & HR

Ext 304
Jbowes@ECFRPC.org



Michelle Cechowski

Emergency Preparedness

Ext 317
MCechowski@ECFRPC.org



Brenda Defoe-Surprenant

Community Planning

Ext 336
BDefoe-Surprenant@ECFRPC.org



Luis Nieves-Ruiz

Economic Development

Ext 308
LNievesRuiz@ECFRPC.org



Jenifer Rupert

Resilience

Ext 302
JRupert@ECFRPC.org



Joshua Sheldon

GIS

Ext 330
JSheldon@ECFRPC.org

OUTREACH & ACCOLADES



BROWNFIELDS CONFERENCE

Economic Development staff presented at the 2023 National Brownfields Training Conference in Detroit. This opportunity helped the team learn from brownfields leaders from across the nation while also highlighting the important work being done in the ECF region.

With one year left in the grant, the ECFRPC has already surpassed the number of assessments promised to EPA in the grant application with 21 sites assessed across the region. This fall staff applied for another Coalition Assessment Grant in order to continue this successful program.



TAKE OVER THE TRAILS DAY



In February, ECFRPC staff joined other local government and community groups for the annual Take Over the Trails Day in West Orange County. Setting up a table along the West Orange Trail in downtown Oakland, ECFRPC staff engaged with trail users to better understand trail needs while also helping bring awareness to local resources trail users may benefit from.



CERTIFIED EMERGENCY MANAGER

After a year filled with various requirements and aptitude tests, in October of 2023, Michelle Cechowski achieved the honor of being named a Certified Emergency Manager by the International Association of Emergency Managers. This highest-level certification is only held by 132 in Florida and fewer than 2,000 worldwide.

She was also published in the industry-leading publication HazMat HQ in which she highlighted the tragic history that preceded the creation of Local Emergency Planning Committees while also providing a refresher of the ongoing positive impact LEPCs have had on improving incident response throughout the region and state.



OUTREACH & ACCOLADES



DIVERSITY IN BUSINESS

We were pleased to see Luis Nieves-Ruiz, FAICP, among the Orlando Business Journal's 2023 Diversity in Business Awards honorees. This latest honor comes on the heels of other local and national recognitions for the vital work Nieves-Ruiz does across our region. In December of 2022, Luis Nieves-Ruiz was awarded the Don Quijote Award in the Professional of the Year Category.



NADO AWARDS

We were honored to have received three 2023 Aliceann Wohlbruck NADO Impact Awards. The annual awards, hosted by the National Association of Development Organizations (NADO), highlight creative approaches to advancing regional economic development and increasing our knowledge of the region's ever-changing challenges. The 2023 class of awardees was comprised of 108 projects from 71 organizations spanning 28 states.

Palm Bay Economic Development Strategic Plan - The Palm Bay Economic Development Strategic Plan provides a road map for Brevard County's largest jurisdiction to harness its people, economic, and place-based assets to generate high-quality jobs, promote entrepreneurship, increase economic resiliency, create opportunities for inclusive economic development, and improve the community's long-term prosperity.

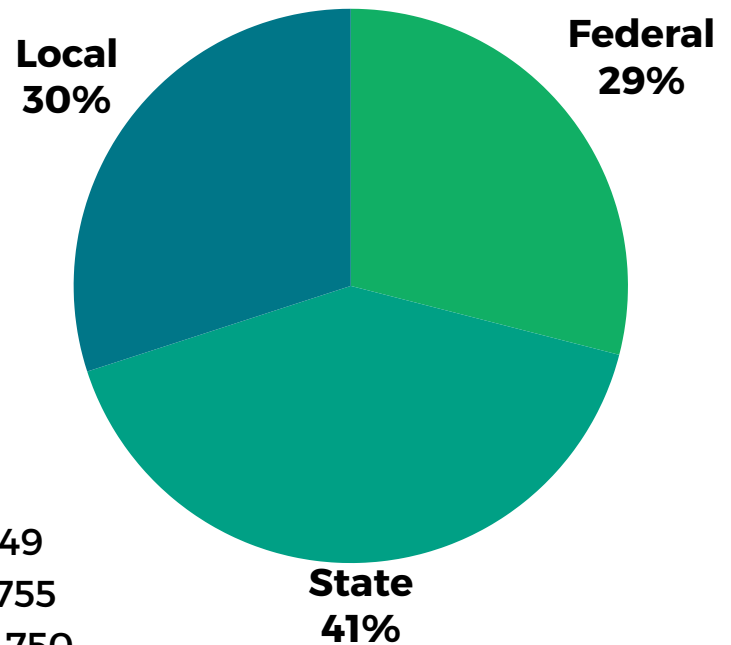
Low Impact Development (LID) Implementation Ordinance Recommendations - The ECFRPC, in collaboration with the University of Florida IFAS Extension Program for Resource Efficient Communities (PREC) and Volusia County, developed a Low Impact Development (LID) implementation guidebook and ordinance recommendations to help local governments incorporate LID best management practices and incentives into ordinances to improve water quality and mitigate flooding.

Risk & Vulnerability Assessment - The Risk & Vulnerability Assessment was established to assess regional scale impacts from shocks and stressors to provide support for implementing strategies and resilient practices within the region through standardized and consistent hazards, climate sensitivities, social vulnerabilities, and asset datasets that can be utilized for each vulnerability assessment.

FINANCIAL OVERVIEW

The ECFRPC's 2022-2023 fiscal year budget was \$3,496,256, with the majority (70%) derived from federal and state grants and contracts.

ECFRPC Funding Sources



ECFRPC Budget by Category

Economic Development	\$432,649
Emergency Management	\$1,152,755
Planning & Technical Assistance	\$1,089,750
Resilience	\$809,020
Transportation	\$12,082

The Return on Investment measures the amount of federal and state funds received by the ECFRPC to support our local partners or funds received within our region which are directly tied to our programs, such as EDA CEDS, relative to the amount paid on assessments during the past five years. To calculate the ROI, the net gain (\$57.5 million) was divided by the total assessment costs (\$4.4 million).

Based on this formula,

The region gained

\$13.07 for every \$1
paid to the ECFRPC

DEPARTMENT UPDATES

Emergency Preparedness

- Regional Domestic Security Task Force Region 5 Tabletop Exercise
- Florida Hazardous Waste Symposium
- Hurricane Response

Community Planning

- Vulnerability Assessments

Resilience & the R2C

- More Partners, More Strategies
- CBRG
- Leadership Summit
- Risk and Vulnerability Assessments
- R2C

Economic Development

- Economic Impact Analysis

GIS

- The Compound
- Sensitivity
- Technical Assistance





EMERGENCY PREPAREDNESS

626 FIRST RESPONDERS TRAINED
WITH LEPC/HMEP FUNDING

REGIONAL DOMESTIC SECURITY TASK FORCE REGION 5 TABLETOP EXERCISE

The ECFRPC partnered with the Regional Domestic Security Task Force (RDSTF Region 5) and the Central Florida Intelligence Exchange (CFIX), Central Florida's Fusion Center, to conduct a regionwide Cyber Tabletop Exercise.

This regional collaboration, funded with Urban Area Security Initiative (UASI) grant funding highlighted the importance of multi-jurisdictional response and recovery procedures in the event of several overlapping cyber-security incidents.

The exercise addressed critical infrastructure, election security, Emergency-911 systems, and public information/rumor control.

Altogether, the event hosted 91 participants, including 20 evaluators:

- 32 different agencies
- 7 out of 9 counties represented
- 13 cities
- 3 state agencies
- 1 federal agency
- 8 support agencies:
 - Florida Digital Service
 - Florida Municipal Power Agency
 - Lockheed Martin
 - Lynx
- Mass Virtual, Inc.
- Orlando Health
- Regional Planning Council
- ThreatLocker (keynote speaker Craig Stevenson)
- 24 Cyber / IT representatives
- 35 Emergency Managers
- 23 Law Enforcement
- 9 Public Information Officers (PIOs)



EMERGENCY PREPAREDNESS

10TH ANNUAL FLORIDA HAZ-MAT SYMPOSIUM

Celebrating its tenth year, the Florida HazMat Symposium saw nearly 600 hazmat responders and emergency preparedness personnel gather in Daytona Beach for what has become one of the nation's leading HazMat training events. The week-long symposium offers emergency personnel from across the state and nation the opportunity to train alongside leaders from around the world.

Highlights from this year's event included a Hazardous Materials Team Competition at Volusia County Fire Rescue Training Facility and a keynote panel featuring Armando Bevelacqua, Tobias Frost, Christopher Gould, and Gregory Noll. Congratulations to Martin County HazMat, Brevard County HazMat, and Orlando HazMat, for their first, second, and third place wins, respectively, at the HazMat Team Competition. We thank all of the sponsors and individuals, especially the U.S. Department of Transportation Pipeline and Hazardous Materials Safety Administration (PHMSA), who helped make this decennial symposium a success.



HURRICANE RESPONSE

Major Hurricane Idalia formed as a Tropical Depression on August 26th and strengthened into a Tropical Storm later that day. As it traversed the Gulf of Mexico, it underwent rapid intensification, briefly becoming a Category 4 hurricane before making landfall in the Big Bend region of Florida as a Category 3 on August 30th. Idalia was the most powerful hurricane to hit Florida's Big Bend region since the 1896 Cedar Keys hurricane.

Due to Idalia, the Central (FL) All Hazards Incident Management Team (Central AHIMT) was placed on standby. On the morning of August 31st, the State Emergency Operations Center (SEOC) requested the Central AHIMT deploy to Hamilton County, Florida.

Michelle Cechowski, Director of Emergency Preparedness, deployed with the team as the Planning Section Chief along with 7 other emergency management professionals from agencies in Central FL. The team was deployed for ten days. During the deployment, the following was accomplished for the Hamilton County community of approximately 14,500 residents.

Through Points of Distribution sites, the following resources were provided:

- 549,200 bottles of water
- 162,100 Meals Ready to Eat (MREs)
- 9,661 tarps
- 19,200 hot meals
- Utilizing a StarLink, provided by the SEOC, the Central AHIMT was able to provide increased reliability to internet services, increasing the Hamilton County EOC's Wi-Fi from 20 Mbps to 220 Mbps.

The Central AHIMT utilized the Federal Emergency Management Agency (FEMA) Community Lifelines to provide a common operating picture of the restoration of essential services in Hamilton County. The Community Lifelines Analysis was performed by the team at least once a day with input from the local EOC.

The following public outreach initiatives included:

- 52 social media posts over 21 days (this count includes scheduled posts made by the Central AHIMT after demobilization).
- Developed, updated, and distributed six (6) double-sided fliers with short-term recovery information.
- Community meeting with an attendance of 162 individuals from the farming and agriculture industry as well as attendance from local and state officials.



COMMUNITY PLANNING

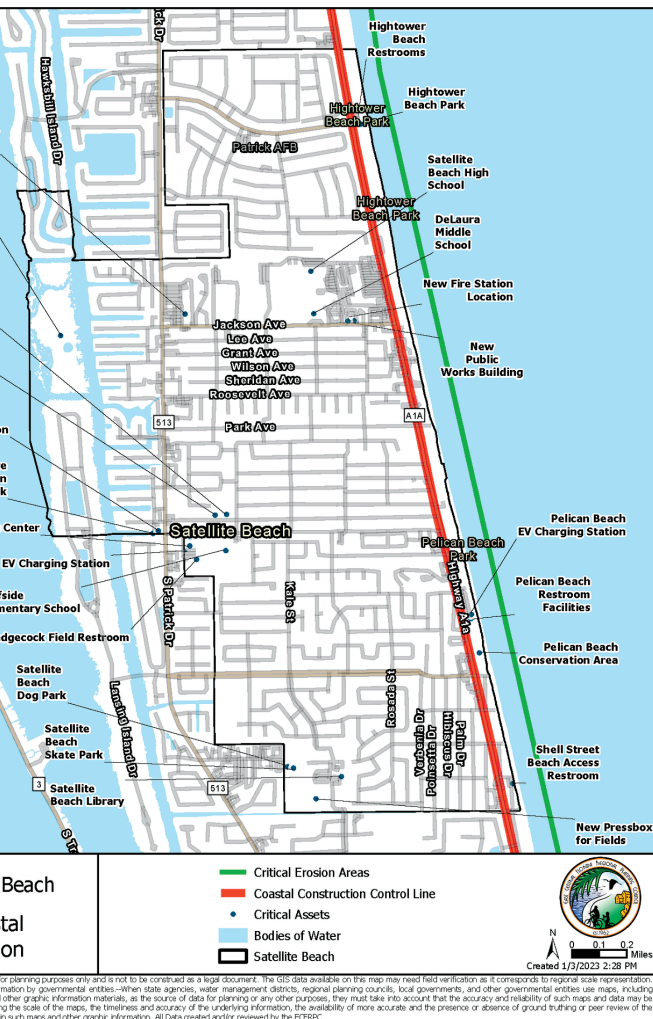
VULNERABILITY ASSESSMENTS

Over the last year, the ECFRPC has worked with multiple agencies to conduct Vulnerability Assessments. These projects are heavily driven by the Resilient Florida Grant program legislation and rely on GIS to better prepare local government infrastructure for flooding and sea level rise.

Some of the most consistent correlating drivers of vulnerability include safe and affordable housing; safe open spaces; health care access; food access and security; access to energy and clean water; economic mobility; and safe, clean, reliable, and affordable transportation. In addition to focusing on management and response to shocks and stressors, building adaptive capacities through robust, integrated processes to address these “drivers” will lead toward transformative change and decrease vulnerability overall in the region.

To help streamline the process of analyzing vulnerabilities and working closely with the Planning Department, standards and processes were created. Moving into 2024, the GIS and Planning team will be expanding this methodology into other areas like Comprehensive Planning, conservation/open space planning, and future land use considerations.

As part of the sensitivity analysis, the ECFRPC employed a Social Vulnerability Index (SoVI) developed by Dr. Christopher Emrich (University of Central Florida). The project team worked to further expand this methodology to vulnerability assessments, with consideration of natural hazards, risks, and exposure. This is important because where SoVI identifies marginalized populations with less capacity to prepare for, respond to, and rebound from disasters (like hurricanes and extreme flooding), population density allows decision-makers to understand not only the underlying infrastructure but the populations that those assets serve.



RESILIENCE & THE R2C



MORE PARTNERS, MORE STRATEGIES

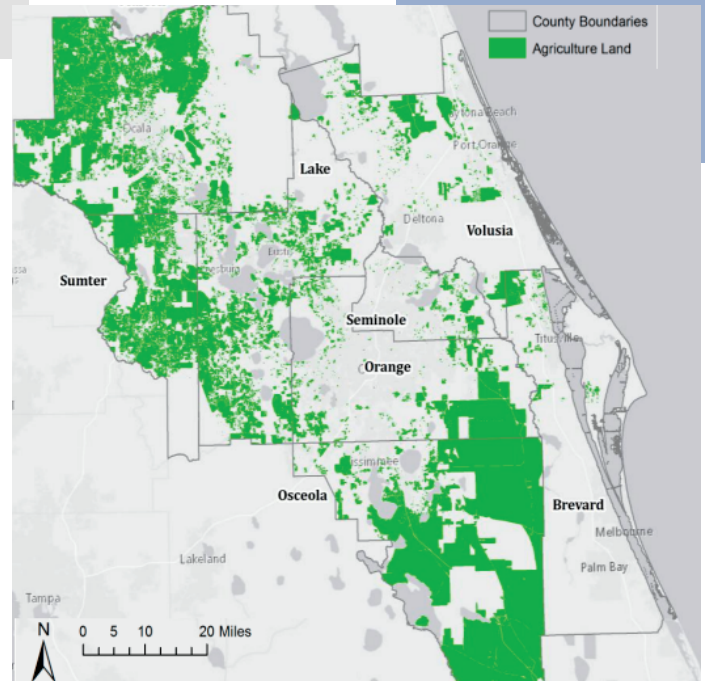
Using one of the dryer months of the year to bring awareness to water conservation, in 2023, the Council designated April as Water Conservation Month. The designation was part of a larger One Water focused on water conservation and the role planning has in ensuring the region can continue to meet its water demands.

Later in the year, the Council passed a Resolution supporting the Lake to Lagoon grant proposal, which was awarded \$2.5 million from the Alachua Conservation Trust.

2023 also saw the Regional Resilience Collaborative's Conservation Strategies framework integrated in a majority of ECFRPC counties. With five counties now using this shared approach to conservation resilience, the region is making historic strides in ensuring our unique local biodiversity remains robust.

Climate Pollution Reduction Grant

The EPA awarded a \$ 1 million Climate Pollution Reduction Grant (CPRG) in 2023. The grant enables us to continue our ongoing resiliency efforts in developing a comprehensive climate action plan for the region over the next 4 years. The funding enables the advancement and expansion of our greenhouse gas inventory and the development of near-term and long-term goals, strategies, and measures to reduce emissions and pollution across the region. A key part of this work will engage low-income and disadvantaged communities (LIDAC) in this process and show how these communities and the region will benefit from the measures proposed by decreasing pollution and increasing climate resilience.



Regional Resilience Collaborative

AHEAD OF THE CURVE: THE R2C LEADERSHIP SUMMIT 2023

After launching as a successful virtual event in 2021, this year saw the first in-person Regional Resilience Collaborative (R2C) Leadership Summit: Ahead of the Curve; Empower, Innovate, Accelerate. Taking place at Kennedy Space Center on October 10 and 11, the two-day summit harnessed the inspiring true stories forged at this historic spaceport.

The summit hosted numerous experts from across the nation for action-focused dialogue aimed at highlighting the momentum and interdisciplinary nature of resilience. Located in the same building as the American Astronaut Hall of Fame, the summit highlighted the unique challenges our state faces.



#thekeyisWE

**Empower
Innovate
Accelerate**

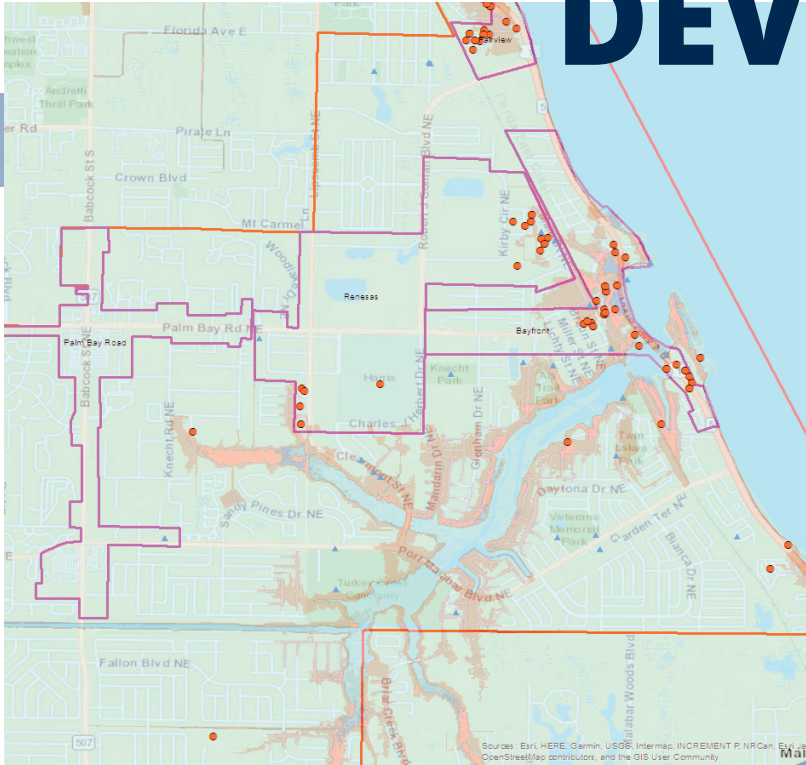


Mere feet from a hall honoring leaders such as Sally Ride and Christa McAuliffe, Ahead of the Curve welcomed two women as the dual keynotes for the event. Day One saw Marissa McInnis – Lead on Climate Policy and Interagency Engagement at the Department of Defense, in the Office of the Deputy Assistant Secretary of Defense for Environment and Energy Resilience, challenge the audience with her dual Adaptation and Mitigation vision of Resilience. Day Two had Paula Pagniez – who serves on the FEMA National Advisory Council and is a Global Board Director for the United Nations Office for Disaster Risk Reduction (UNDRR) ARISE program, lay out her vision of empowering communities through resilience data, social capital, and private enterprise.

Experts from agencies ranging from transit authorities to international researchers were hosted across more than half a dozen panel discussions. Each day also saw other highlights, with Day One being capped off by a sunset cocktail reception in the iconic KSC Rocket Garden. Day Two highlighted risk reduction across sectors, with conversations including local private enterprise and nonprofit sectors. The event was closed by a summary from one of the region's best and most experienced scholars, The Honorable Jim Bacchus, Distinguished University Professor of Global Affairs and Director of the Center for Global Economic and Environmental Opportunity at the University of Central Florida. Having served two terms as the chief judge for the highest court of world trade and as a US congressman, Bacchus used his extensive expertise on global economics to frame the more localized conversations that had occurred over the two days while acknowledging the historic location for the summit.



ECONOMIC DEVELOPMENT



Economic Impact Analysis

At the request of the North Brevard Economic Development Zone, the ECFRPC used the REMI PI+ model to estimate the economic impact of the redevelopment of the old Searstown Mall in Titusville. The developer plans to invest \$160 million to transform the area into an open-air lifestyle center containing a mixture of residential, retail, medical, and dining uses. The study found that the long-term benefits of this project surpass the amount of incentives requested by the developer.

The "Economic Impact of Early Care and Education" study is comprised of three economic impact scenarios that explain the vital role of the childcare industry in Seminole County's economic landscape. Among many things, this analysis found that the early childhood sector supports close to 26,000 jobs or eight percent of the County's workforce. Moreover, the loss of childcare sector capacity could cost the County about 4,8000 jobs per year. The final results of the study were presented to the Early Learning Coalition of Seminole Board of Directors on December 13, 2023.

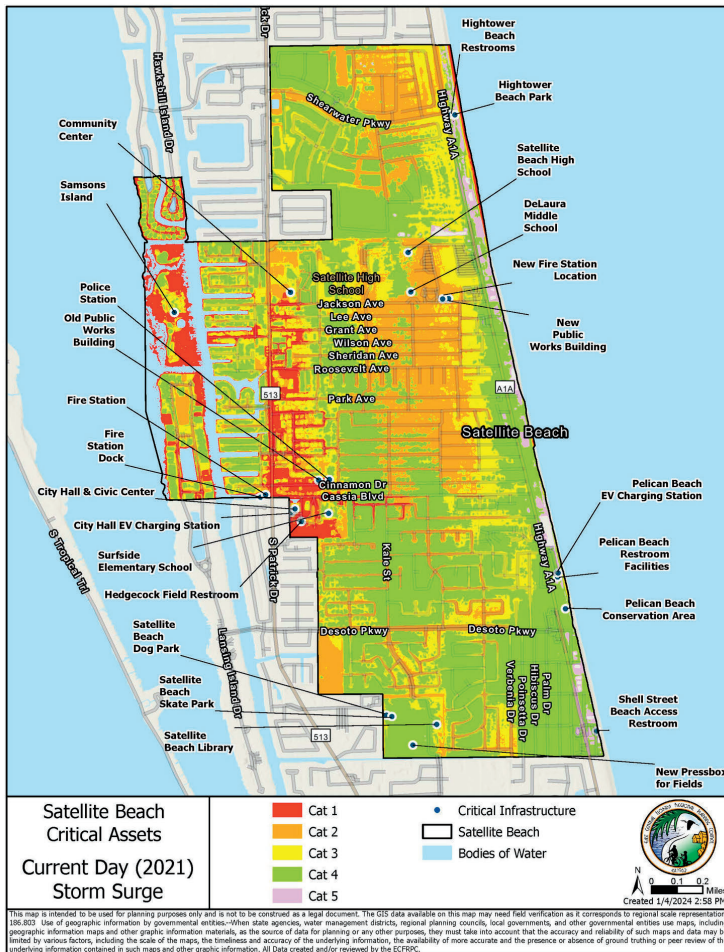
The ECFRPC partnered with the National Entrepreneur Center (NEC) to perform an economic valuation analysis that quantifies the collective impact of NEC and its partners on the regional economy. The study found that the NEC and its providers are responsible for the creation of 35,831 jobs, \$6.9 million in output/sales, and \$2.6 billion in personal income. These activities also added \$4.4 billion to the region's gross domestic product. The NEC in Orlando is a pivotal force in Central Florida's economic realm, serving as a hub for entrepreneurial empowerment and innovation. NEC's collaborative approach distinguishes it from other hubs, housing 19 resource partners within one space and fostering synergies that drive cost efficiencies and operational enhancements, enabling greater outreach and impact.



GEOGRAPHIC INFORMATION SYSTEM

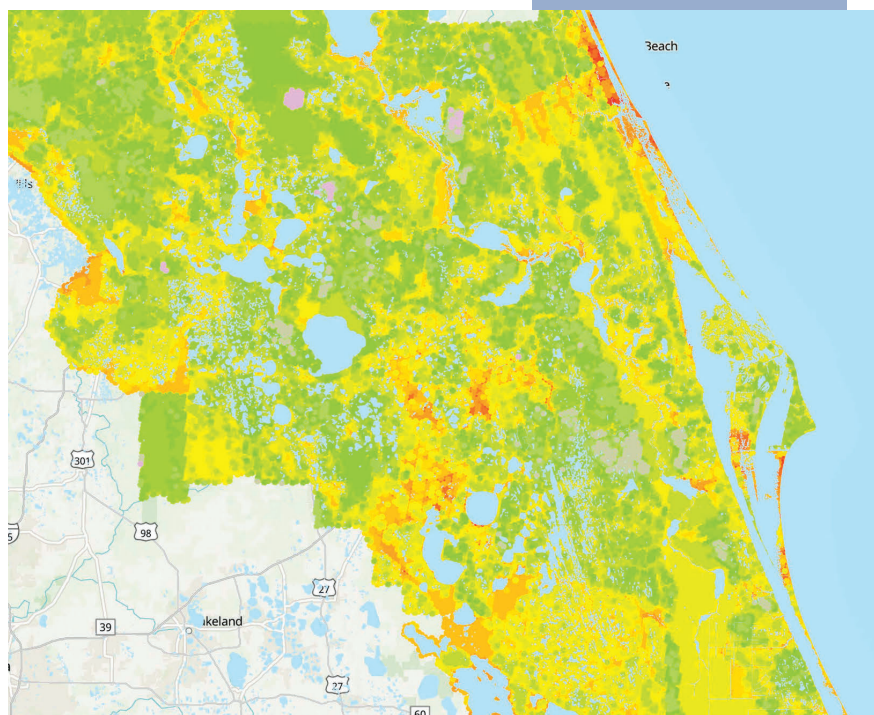
The Compound

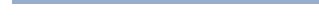
This winter, the ECFRPC completed the Existing Conditions Analysis for the vast, unoccupied area of Palm Bay known as The Compound. The analysis discusses the history of how the southwest corner of Palm Bay, a 1980s suburban housing development that never materialized, came to a multi-decade halt, and an in-depth current analysis of land use characteristics of all properties and land parcels within the study area. This analysis includes oversight of acreage, property ownership and contiguity, wetlands, environmentally sensitive areas, and property entitlements. Potential opportunities such as an employment center are mentioned, which will be further expanded in the project's second phase.



Sensitivity

From working on Vulnerability Assessments, one of the requirements per state statute is defining sensitivity. The ECFRPC partnered with local academics in developing a way to define what sensitivity looks like in our counties and region. This includes considerations for flood risks, social impacts, and additional factors. Thanks to this work, we now have a way to visually see where areas are more sensitive to flood risks and score the assets that fall therein.







**We thank the interns who have served alongside us this year.
They include;**

Abigail Herrick – Economic Development
McKenna Korzeniewski – Emergency Preparedness
SallyRose Savage – Economic Development
Sophie Ognjenvic – Economic Development



407-245-0300



Info@ECFRPC.org



www.ECFRPC.org



Jerry Livingston

In Remembrance

1942 – 2023

Legal Counsel to the
ECFRPC from 1971 to 2023